

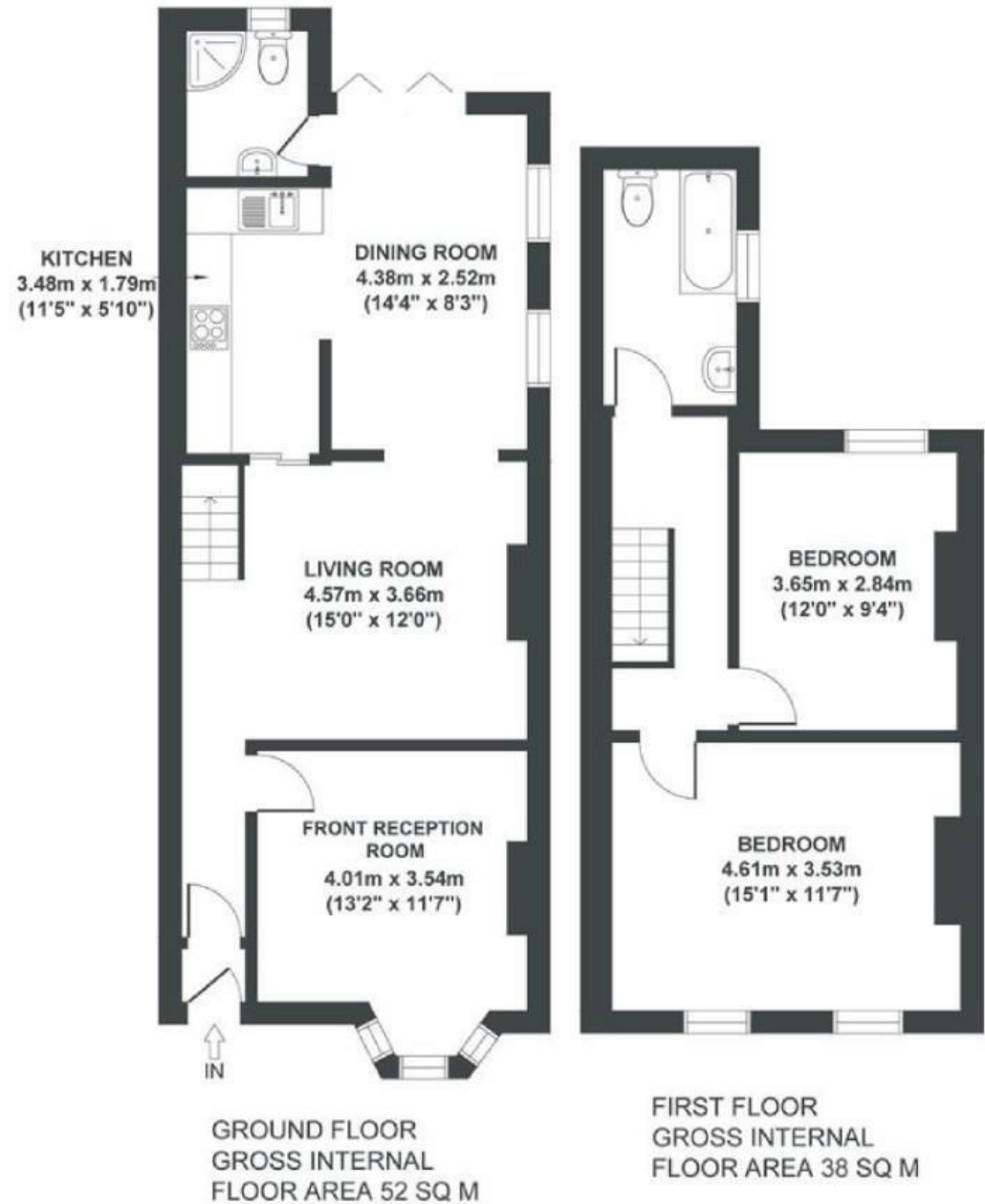
**Boardwalk**

# Balmain Street

## TOTTERDOWN

APPROXIMATE FLOOR AREA  
90 SQM / 969 SQFT

BOOK A VIEWING  
01174 532 985  
[hello@boardwalkpropertyco.com](mailto:hello@boardwalkpropertyco.com)



Illustrations are for reference purposes only, measurements are approximate, not to scale.

Boardwalk

# Balmain Street

TOTTERDOWN, BRISTOL



£450,000



Bristol, BS4

3RX



2 Bedrooms



1 Bathrooms

*"When we moved into Balmain Street, we never imagined for a moment that we would be here for 25 years! Totterdown is by far the friendliest city location I have ever come across. The beautiful green spaces of Arncliffe Park, Perrett Park and Victoria Park have made it a great place to have dogs and it's easy to get out into Somerset and beyond for walks, country pubs and day trips. The selection of shops, cafes and bars has changed a lot over the time we've been here and it's the best it's ever been now. We have eaten countless delicious pizzas from 'Accapella', appreciated the convenience of a local pharmacy and the Co-Op and we've really loved the addition of the wholefood store & deli, Fox & West, and local bars - The Bank and Southside Bar and Kitchen. Great local pubs - The Oxford, The Shakespeare and The Star and Dove with great food and regular live music."*

